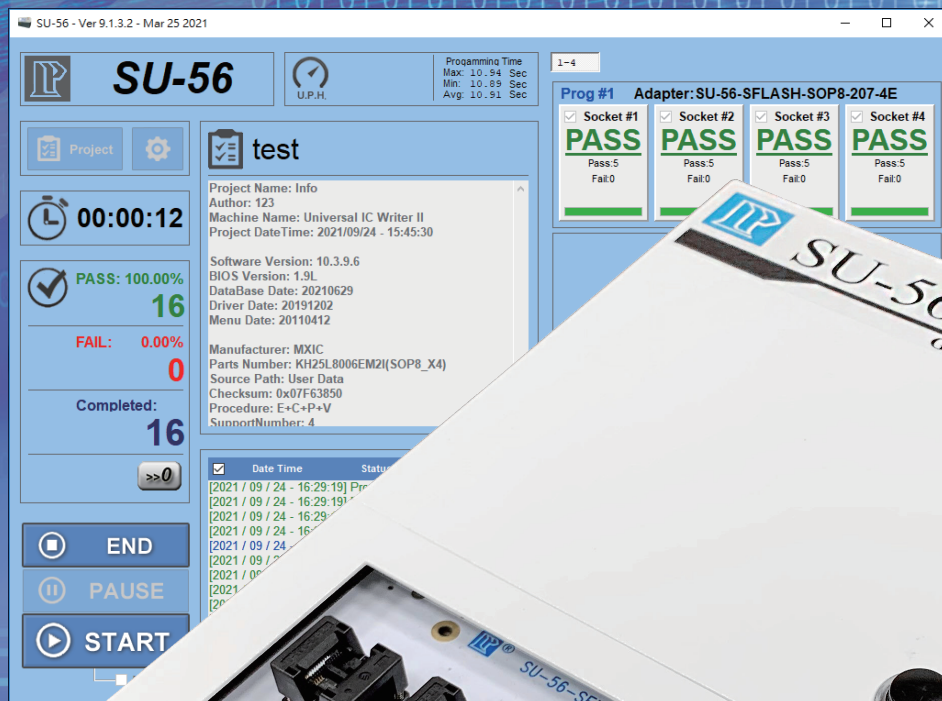


SU-56

Universal & Gang Programmer

One programmer meets diverse programming requirement



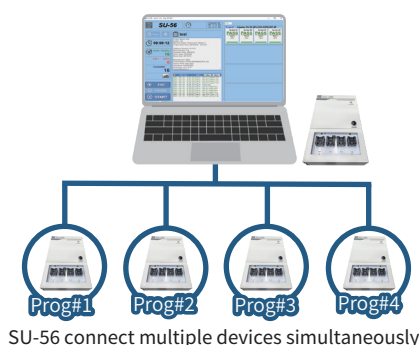
SU-56

Universal & Gang Programmer

One programmer meets diverse programming requirement



The SU-56 programmer can achieve a variety of flexible combinations of performance. It can provide fast and effective countermeasures for the increasingly complex programming needs. Regardless of the various aspects of IC type, packaging, capacity, speed, etc. There is always a ideal solution for user.



Features

- Architected for multi-tasking module function, it can quickly assemble a suitable programming project.
- One computer can connect multiple SU-56 in series. From R&D, trial production to mass production, a programmer with multiple functions is extraordinary value.
- Universal type of architecture can demonstrate dedicated type of performance.
- Supports a large number of IC brands, part numbers and packages.
- Supports programming of 1.8V low-voltage components, and the module can be replaced to support 1.2V.
- Supports HDCP programming function.
- Offers optional projects to develop programming or testing software for special components.
- Provides complete programming records to facilitate production management.



Specifications

Supported Devices	EEPROM, SPI NAND/NOR Flash, Paralle NAND/NOR Flash, eMMC/eMCP, MCU, PIC, CPLD, FPGA...	
Applicable Packages	SOP, SSOP, TSOP, TQFP, QFN, WSON, SNT, WLCSP, BGA...	
Applicable Packages	INTEL HEX, MOTOROLA HEX, TEK HEX, ASCII HEX, BINARY...	
Supported Adapter	1~4	
Programming Performance	eMMC	43Mbyte/sec
	SPI	1.5Mbyte/sec
	NAND	6.0Mbyte/sec
Pin driver	56~240 (Universal)	
Logic Pin Driver	Signal Level	1.65~6.5V
	Signal Frequency	0~75MHz
PowerDriver	VCC / VIO	1.65~6.5V
	ICC / IIO	400mA
	VPP (VHH)	VPP / VHH: 1.5V ~ 15.5V
	IPP (IHH)	150mA
eMMC I/O	Pin account	88
	Signal Frequency	100~200MHz
eMMC Power	VCC	(500mA / 1.7~3.6V)x2
	VCCQ	(500mA / 1.7~3.6V)x2
Dimensions	250x165x60mm	
Weight	1.5kg	
Power Supply	DC 5V	

Standard Accessories

SU-56 Main unit	x1
USB Cable	x1
Power Cord (Input AC110~240V, Output DC 5V/500mA)	x1

Optional Accessories

Socket Board: SU-56-XXXX-XXXX..., AH-480-XXXX-XXXX...
Multiple Driver Board
eMMC Driver Board
Hi-Speed Driver Board
Customization Driver Board
Support Programming Expansion Board : SU-56-TO-AH-480, SU-56-TO-DIP48, SU-56-NAND-BASE